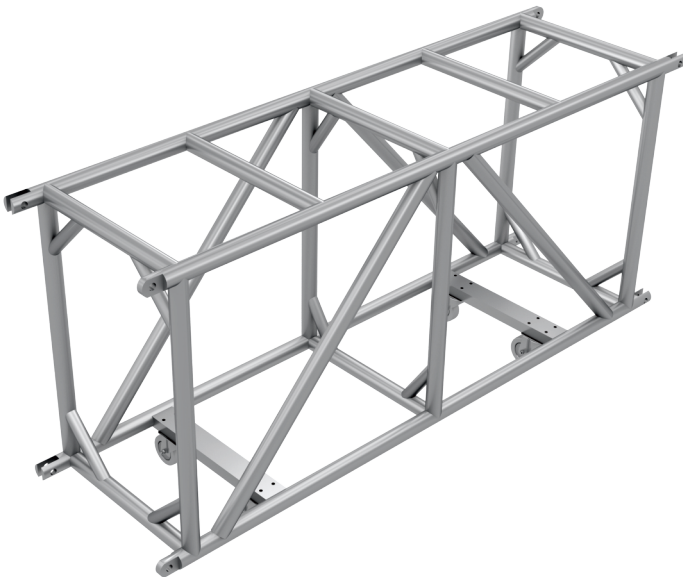
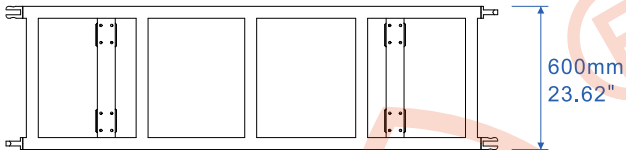


插销桁架系列
Quick Mount Series

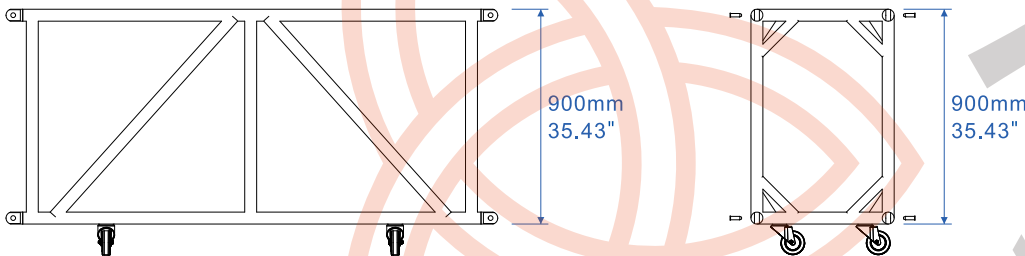
TD-F06090R-50



俯视图
Top view



侧视图
Side view



规格 Dimensions		
形状 Shape	矩形 Rectangular	矩形 Rectangular
材质 Material	EN AW 6082 T6	EN AW 6082 T6
主管 Main Tubes	50 x 6 mm	1.97 x 0.24 in
副管 Braces	50 x 3 mm	1.97 x 0.12 in
重量 Weight	≈35.5 kg/m	≈ 16.08 lbs/ft

1 inch = 25.4 mm 1 m = 3.28 ft 1 lbs= 0.453kg

TD-F06090R-50 铝合金桁架允许荷载表
ALLOWABLE LOADING

跨度 SPAN		平均分布荷载UDL Uniformly Distributed Load		下垂值 DEFLECTION		中心点荷载CPL Centre Point Load		下垂值 DEFLECTION		三段单点荷载TPL single load third points		四段单点荷载QPL single load fourth points		五段单点荷载FPL single load fifth points		自重 total weight
m	ft	kg/m	lbs/ft	mm	inch	kg	lbs	mm	inch	kg	lbs	kg	lbs	kg	lbs	kg
2	6.6	6000	4038.1	1.2	0.047	13000	28697.6	1.0	0.039	9750	21523.2	7020	15496.7	4950	10927.2	52.5
4	13.1	4280	2880.5	2.0	0.079	9250	20419.4	1.8	0.071	7080	15629.1	5680	12538.6	4080	9006.6	86.5
6	19.7	1800	1211.4	2.6	0.102	7600	16777.0	2.4	0.094	5700	12582.8	3980	8785.9	3345	7384.1	120.5
8	26.2	1520	1023.0	5.4	0.213	6250	13796.9	5.2	0.205	4350	9602.6	2950	6512.1	2410	5320.1	173.0
10	32.8	1050	706.7	6.8	0.268	5430	11986.8	6.6	0.260	3840	8476.8	2430	5364.2	1980	4370.9	207.0
12	39.4	690	464.4	10.2	0.402	4620	10198.7	9.6	0.378	3130	6909.5	2120	4679.9	1730	3819.0	241.0
14	45.9	550	370.2	13.1	0.516	3980	8785.9	12.8	0.504	2830	6247.2	1780	3929.4	1660	3664.5	293.5
16	52.5	400	269.2	16.4	0.646	3320	7328.9	15.4	0.606	2280	5033.1	1565	3454.7	1320	2913.9	327.5
18	59.0	320	215.4	20.6	0.811	2990	6600.4	19.6	0.772	2020	4459.2	1340	2958.1	1150	2538.6	361.5
20	65.6	245	164.9	25.8	1.016	2640	5827.8	24.9	0.980	1810	3995.6	1200	2649.0	1030	2273.7	414.0
22	72.2	208	140.0	32.6	1.283	2360	5209.7	29.5	1.161	1630	3598.2	1090	2406.2	902	1991.2	448.0
24	78.7	172	115.8	38.4	1.512	2100	4635.8	36.7	1.445	1405	3101.5	945	2086.1	790	1743.9	482.0
26	85.3	146	98.3	45.1	1.776	1860	4106.0	42.2	1.661	1260	2781.5	816	1801.3	695	1534.2	534.5
28	91.8	120	80.8	58.9	2.319	1590	3509.9	57.1	2.248	1420	3134.7	745	1644.6	640	1412.8	568.5
30	98.4	100	67.3	62.3	2.453	1440	3178.8	60.5	2.382	985	2174.4	660	1457.0	560	1236.2	602.5
32	105.0	81.6	54.9	64.8	2.551	1290	2847.7	62.8	2.472	895	1975.7	612	1351.0	496	1094.9	655.0
34	111.5	60.8	40.9	75.6	2.976	1160	2560.7	71.6	2.819	810	1788.1	552	1218.5	452	997.8	689.0
36	118.1	53.6	36.1	86.1	3.390	1030	2273.7	79.3	3.122	720	1589.4	293	646.8	398	878.6	723.0
38	124.6	45.2	30.4	100.2	3.945	890	1964.7	96.4	3.795	620	1368.7	408	900.7	360	794.7	775.5
40	131.2	40.0	26.9	108.9	4.287	805	1777.0	103.1	4.059	560	1236.2	365	805.7	306	675.5	809.5

1 inch = 25.4 mm 1 m = 3.28 ft 1 lbs= 0.453kg

- 加载数据只适用于静态负荷和两个支撑点。
- 表中所列荷载均为恒荷载，未考虑动力系数。
- 加载数据基于BS-7905-2/ANSI E1.2-2006/CWA 15902-2, GB/T5237。在考虑安全因素时，加载数据应增加0.8。
- 桁架的自重已考虑。
- 适用桁架高度900mm, 弦杆为Φ50*6mm圆管, 腹杆Φ50*3mm圆管。
- **特别注意:** 超过20米的结构，如果由多个部分组合起来而构成的总长度, 将会造成10 - 15%弯曲的可能性(在同等荷载的条件下) . 允许偏差，负载数据不变。

- Loading figures only valid for static loads and spans with two supporting points .
- Spans must be supported at each end.
- If dynamic loads or wind loads are involved, or more supporting points are applied, contact Trinity Customer Service for details.
- Loading figures are based on BS 7905-2/ANSI E1.2-2006/CWA 15902-2 , GB/T5237 . The loading data should multiply 0.8 for Safety factor consideration.
- The self-weight of the trusses has already been taken into account.
- Suitable for trusses with design height of 900mm, Main tubing Φ 50 * 6mm, brace tubing Φ 50 * 3mm.
- Special attention to structure over 20m, if multiple sections combined to make up the total length: Additional Reflection 10 to 15%deflection should be allowed, the allowable loading unchanged .